

DAILY RESEARCH, 16 SEPTEMBER 2020

PT PROFINDO SEKURITAS INDONESIA

**GD PERMATA KUNINGAN LT 19
JL KUNINGAN MULIA KAV 9C GUNTUR SETIABUDI JAKARTA SELATAN 12980**

TELP +62 21 8378 0888

EMAIL : CUSTOMERSERVICE@PROFINDO.COM

WWW.PROFINDO.COM | PROCLICK.PROFINDO.COM

MARKET MOVERS



Bursa saham AS ditutup menguat tipis menjelang pertemuan The Fed terkait Stimulus Ekonomi AS. **DOW +0.01%, S&P +0.51%, NASDAQ +1.21%**

Bursa saham Eropa ditutup mixed menjelang pertemuan The Fed terkait stimulus AS. **Indeks DAX+0.18%, FTSE +1.32%, CAC +0.32%**

Bursa Saham Asia dibuka mixed menjelang pertemuan The Fed terkait stimulus Ekonomi AS. **Hang Seng +0.38%, KOSPI -0.14%, Nikkei -0.09%**

Harga minyak mentah dunia menguat akibat badai Sally yang mengganggu pasokan minyak AS. Harga emas dunia melemah menjelang rapat The Fed terkait stimulus pemulihan Ekonomi AS. **WTI +0.711%, Brent Oil +0.30%, Gold -0.31%.**

IHSG pada perdagangan hari ini diperkirakan akan **BULLISH** dengan Range pergerakan **5091-5187** dengan saham-saham yang dapat diperhatikan : **BJTM MEDC ERAA PFA MTDL WIKA**

MARET DATA

AMERIKA

DOW 30	27,995.60	+2.27	+0.01%
S&P 500	3,401.20	+17.66	+0.52%
NASDAQ	11,190.32	+133.67	+1.21%

EUROPE

DAX	13,217.67	+24.01	+0.18%
FTSE 100	6,105.54	+79.29	+1.32%
CAC 40	5,067.93	+16.05	+0.32%

ASIA

SHANGHAI	3,294.96	-0.72	-0.02%
HANGSENG	24,732.76	+92.48	+0.38%
SET	1,286.18	+13.84	+1.09%
KOSPI	2,441.33	-2.25	-0.09%
JCI	5,100.87	-60.96	-1.18%
NIKKEI	23,421.00	-33.89	-0.14%
ASX	5,938.50	+43.70	+0.74%

COMMODITIES

GOLD	1,960.20	-6.00	-0.31%
WTI OIL	38.55	+0.27	+0.71%
BRENT OIL	40.77	+0.12	+0.30%
COAL	54.10	+0.30	+0.56%
PALM OIL	2930	+18	+0.62%
TINS	18,197.50	-7.50	-0.04%
NICKEL	15,185.00	-60.00	-0.39%

EVENT & ECONOMIC CALENDER

ECONOMIC CALENDER :

INDONESIA

GLOBAL

140920	JAPAN INDUSTRIAL PRODUCTION (MoM) (JUL) EURO INDUSTRIAL PRODUCTION (MoM) (JUL) CHINA INDUSTRIAL PRODUCTION (AGUSTUS)
150920	FRENCH CPI (MoM) (AGUSTUS) ITALIAN CPI (MoM) (AGUSTUS) US INDUSTRIAL PRODUCTION (MoM) (AGUSTUS) US API WEEKLY CRUDE OIL STOCK JAPAN TRADE BALANCE (AGUSTUS)
160920	GBP CPI (MoM) (AGUSTUS) EURO TRADE BALANCE (JUL) US CORE RETAIL SALES (MoM) (AGUSTUS) US CRUDE OIL INVENTORIES US FOMC ECONOMIC PROJECTIONS JAPAN BOJ INTEREST RATE DECISION
170920	EURO CPI (YoY) (AGUSTUS) GBP BOE INTEREST RATE DECISION US INITIAL JOBLESS CLAIMS
180920	GBP RETAIL SALES (MoM) (AGUSTUS) US CURRENT ACCOUNT

CORPORATE ACTION :

DEVIDEN

160920	XISB RP 2.04 (CUM 1609, PAYMENT 2509) XIIT RP 2.04 (CUM 1609, PAYMENT 2509)
--------	--

RUPS

160920	LCGP BUMI BLTA
170920	KOSPI
180920	POOL JIHD HEXA AMIN

IPO

140920	PT MORENZO ABADI PERKASA TBK (ENZO) RP 105
150920	PT PLANET PROPERTINDO JAYA TBK (PLAN) RP 112

RIGTH ISSUE

080920	MEDC RATIO 2:5 (NEW:OLD) CUM 0809 TRADING PERIOD 14-18 SEPT
--------	---

JAKARTA COMPOSITE INDEX



PREVIOUS 15 SEPTEMBER 2020

CLOSING	5100.865 -1.181%
TRANSACTION	IDR 7.983 TRILLION
FOREIGN NETT	IDR 1104 BIO (SELL)

PREDICTION 16 SEPTEMBER 2020

BULLISH (TECHNICAL REBOUND)
RANGE 5091-5187

BOTTOM FISHING AREA
MACD : HISTOGRAM NEGATIF MENGECIL DAN BERSIAP
GOLDEN CROSS

TECHNICAL RECOMENDATION



BJTM – PT BPD JAWA TIMUR TBK

CLOSING 15/9/2020 RP 560 (-2.6%)

ACCUM BUY 550-580

TARGET PRICE 640

STOPLOSS 550

BOTTOM FISHING AREA

STOCHASTIC : UPTREND

MACD : HISTOGRAM NEGATIF DAN LOWER AREA

TECHNICAL RECOMENDATION



MEDC – PT MEDCO ENERGI INTERNASIONAL TBK

CLOSING 15/9/2020 RP 402 (-2%)

BUY

TARGET PRICE 480

STOPLOSS < 400

BOTTOM FISHING AREA

STOCHASTIC : OVERSOLD

MACD : HISTOGRAM NEGATIF DAN LOWER AREA

TECHNICAL RECOMENDATION



ERAA – PT ERAJAYA SWASEMBADA TBK

CLOSING 15/9/2020 RP 1645 (+1.5%)

**SELL ON STRENGTH
TAKE PROFIT 1695**

**THREE WHITE SOLDIERS
STOCHASTIC : UPTREND
MACD : HISTOGRAM NEGATIF MENGECIL DAN
BERSIAP GOLDEN CROSS**

TECHNICAL RECOMENDATION



JPFA – PT JAPFA COMFEED INDONESIA TBK

CLOSING 15/9/2020 Rp 1120 (-1.8%)

**SELL ON STRENGTH
TAKE PROFIT 1155**

**SHOOTING STAR
STOCHASTIC : UPTREND
MACD : HISTOGRAM NEGATIF DAN NETRAL**

TECHNICAL RECOMENDATION



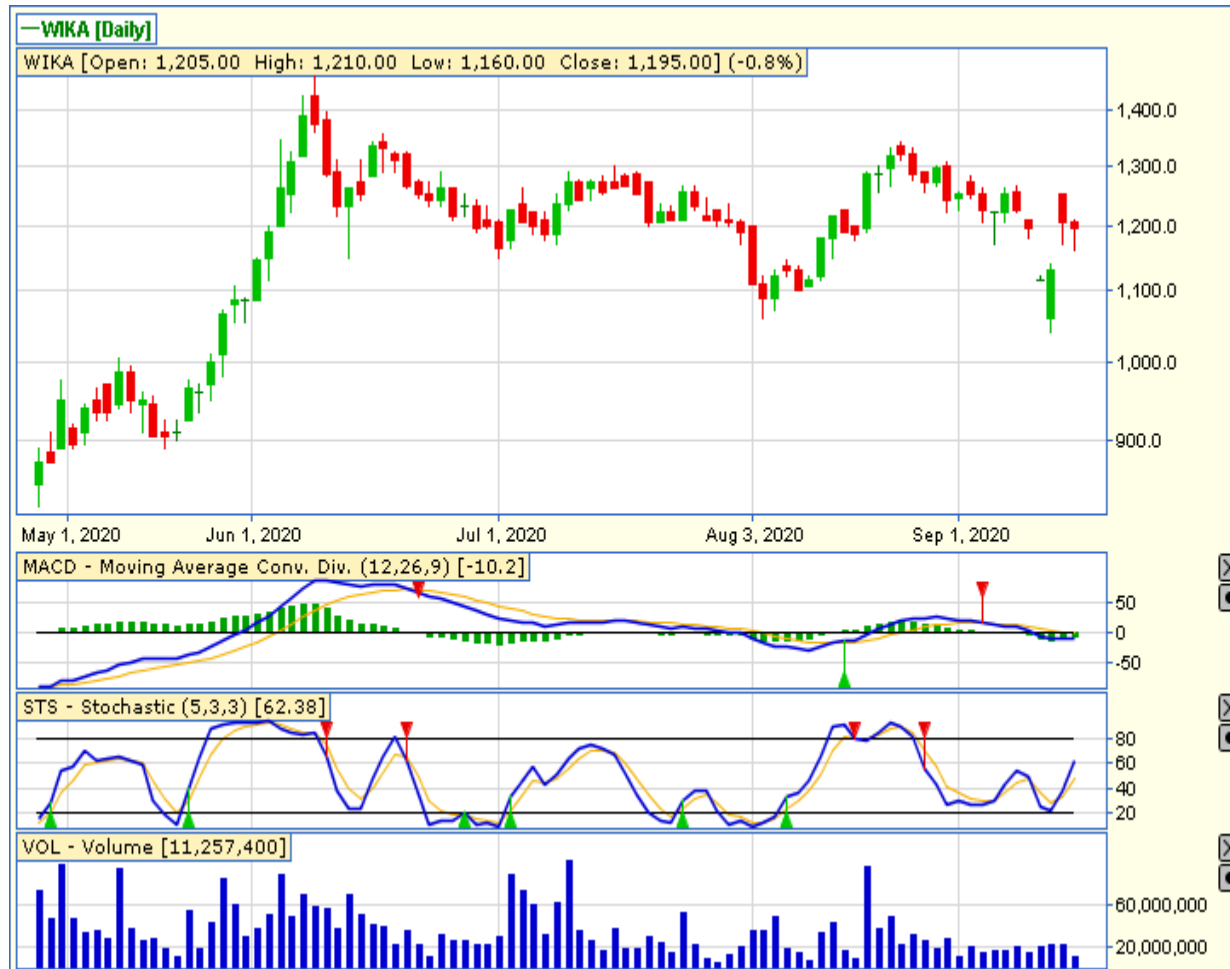
MTDL – PT METRODATA ELECTRONICS TBK

CLOSING 15/9/2020 RP 1670 (+0.91%)

**SELL ON STRENGTH
TAKE PROFIT 1710**

THREE WHITE SOLDIERS
STOCHASTIC : UPTREND
MACD : HISTOGRAM NEGATIF MENGECEIL DAN
BERSIAP GOLDEN CROSS

TECHNICAL RECOMENDATION



WKA – PT WIJAYA KARYA (PERSERO) TBK

CLOSING 15/9/2020 RP 1195 (-0.8%)

**SELL ON STRENGTH
TAKE PROFIT 1250**

HAMMER

STOCHASTIC : UPTREND

**MACD : HISTOGRAM NEGATIF MENGECIL DAN
BERSIAP GOLDEN CROSS**

RESEARCH TEAM



YULIANA

**RESEARCH ANALYST &
CORPORATE FINANCE**



DIMAS WP PRATAMA, CSA

TECHNICAL ANALYST

EQUITY CAPITAL MARKET TEAM



JESSIE JAMES

HEAD OF EQUITY SALES



PRASETYO NUGROHO

HEAD OF DEALING ROOM



GABRIELLA PRATIWY

HEAD OF ONLINE TRADING